



		Name				Jelly Bean Flavor				Hobby			
		Marshmallow	FloppyEars	Cottontail	Sunshine	grape	strawberry	cherry	orange	cooking	dancing	weaving	photography
Birthday	April 1												
	April 3												
	April 5												
	April 7												
Hobby	cooking												
	dancing												
	weaving												
	photography												
Jelly Bean Flavor	grape												
	strawberry												
	cherry												
	orange												



Track your answers			
Name	Date	Flavor	Hobby
Sunshine			
Cottontail			
FloppyEars			
Marshmallow			

A group of 4 Easter bunnies were all born in the month of April. You must determine whose birthdays are when, in addition to figuring out which hobby and favorite jelly bean flavor belong to which bunny.

1. Of the bunny who enjoys weaving and the bunny who likes orange jelly beans, one was born on April 3 and the other was born on April 5.
2. Cottontail does not enjoy weaving and does not like strawberry jelly beans.
3. The bunny who likes strawberry jelly beans was born before the bunny who enjoys cooking.
4. The bunny who enjoys cooking likes orange jelly beans.
5. The bunny who enjoys cooking is not FloppyEars.
6. Sunshine does not like grape or orange jelly beans.
7. The bunny born on April 1 is Cottontail.
8. The bunny who enjoys dancing is not Marshmallow and does not like grape jelly beans.
9. The bunny who enjoys weaving was born before the bunny who likes grape jelly beans.
10. Either the bunny who likes grape jelly beans or the bunny who likes cherry jelly beans is FloppyEars.
11. The 4 bunnies are Sunshine, the one born on April 7, the one who loves cherry jelly beans, and the one who enjoys cooking.
12. The oldest bunny likes dancing and cherry jelly beans.





		Name					Basket Item					Favorite Food				
		Lily	Thumper	Daffodil	Trixie	Carrot	plastic eggs	chocolate	candy	toy	coloring book	salad	fruit	pizza	cheeseburger	ham
Favorite Color	red															
	pink															
	yellow															
	green															
	blue															

Favorite Food	salad															
	fruit															
	pizza															
	cheeseburger															
	ham															



Basket Item	plastic eggs															
	chocolate															
	candy															
	toy															
	coloring book															

Track your answers			
Name	Color	Item	Food
Trixie			
Lily			
Daffodil			
Carrot			
Thumper			

A group of 5 Easter bunnies get together every year to prepare Easter baskets. You must determine who puts what item in each basket, in addition to figuring out each bunny's favorite food and favorite color.

- The bunny who loves salad does not enjoy putting coloring books in Easter baskets.
- The bunny who loves ham never puts toys in Easter baskets.
- The bunny whose favorite color is pink does not love ham.
- Trixie's favorite color is red and she also loves fruit.
- Lily's favorite color is pink and she does not put toys in Easter baskets.
- The bunny who loves blue enjoys putting plastic eggs in Easter baskets.
- The bunny who is generous with candy is not Lily.
- Daffodil puts chocolate in Easter baskets and does not love salad.
- The bunny who loves ham does not put plastic eggs in the baskets.
- The 5 bunnies are the bunny who loves cheeseburgers, the bunny who is generous with chocolate, the bunny who loves the color red, the bunny whose favorite food is salad, and Thumper.
- The bunny whose favorite color is green is named after a vegetable.
- The bunny who loves salad does not put toys in Easter baskets.
- The bunny who loves coloring books is Lily.

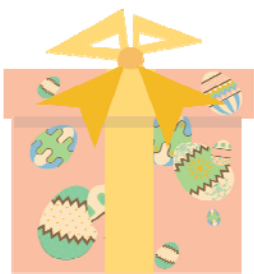




# Solutions

Cottontail	April 1	cherry	dancing
Sunshine	April 3	strawberry	weaving
Marshmallow	April 5	orange	cooking
FloppyEars	April 7	grape	photography

Trixie	red	toys	fruit
Lily	pink	coloring book	cheeseburger
Daffodil	yellow	chocolate	ham
Carrot	green	candy	salad
Thumper	blue	plastic eggs	pizza



# Easter Sudoku

1				6			8	
2	6			4	9	5	1	
	7							2
	9							3
	8			9				
6		1		7		9		5
			4		2			
7				8	3		4	
	1	4		5				9



# Easter Sudoku

7	8		4	9		6		
5		3	7	1				4
					5		3	
8		5	3		7			
			5	4		2	8	
4		1	9					
1						3		2
		9					5	
3				7	4		9	8



# Easter Sudoku

8	5							3
			5				1	
6			8	2	3		4	
		3	7	9	5			4
				4				7
	6	7				5		
	1					4	7	
	4			8	1	2		6
5	2	8	4	7				



# Easter Sudoku

9		4		3		2		7
				5	2		9	
2		1	4				5	
				7		6		9
	2				8		3	
4		6						
6		2	5		1			
								2
	3		6		7	1		



# Solutions

1	5	9	2	6	7	3	8	4
2	6	3	8	4	9	5	1	7
4	7	8	5	3	1	6	9	2
5	9	7	1	2	4	8	6	3
3	8	2	6	9	5	4	7	1
6	4	1	3	7	8	9	2	5
9	3	6	4	1	2	7	5	8
7	2	5	9	8	3	1	4	6
8	1	4	7	5	6	2	3	9

7	8	2	4	9	3	6	1	5
5	9	3	7	1	6	8	2	4
6	1	4	8	2	5	7	3	9
8	2	5	3	6	7	9	4	1
9	6	7	5	4	1	2	8	3
4	3	1	9	8	2	5	6	7
1	4	8	6	5	9	3	7	2
2	7	9	1	3	8	4	5	6
3	5	6	2	7	4	1	9	8

8	5	2	9	1	4	7	6	3
9	3	4	5	6	7	8	1	2
6	7	1	8	2	3	9	4	5
1	8	3	7	9	5	6	2	4
2	9	5	6	4	8	1	3	7
4	6	7	1	3	2	5	8	9
3	1	6	2	5	9	4	7	8
7	4	9	3	8	1	2	5	6
5	2	8	4	7	6	3	9	1

9	5	4	1	3	6	2	8	7
3	6	8	7	5	2	4	9	1
2	7	1	4	8	9	3	5	6
5	8	3	2	7	4	6	1	9
1	2	7	9	6	8	5	3	4
4	9	6	3	1	5	7	2	8
6	4	2	5	9	1	8	7	3
7	1	5	8	4	3	9	6	2
8	3	9	6	2	7	1	4	5

